

# COLOR AND FINISH OPTIONS

## *AL- Fiberglass finishes*

### FINISH SELECTION A

**Poly-Lite Crete** - A light-weight stone composite material. The product is a combination of polyester resins integrated with sand and other aggregate properties. The product is suitable for indoor or outdoor applications. Select from 30 standard colors. Custom colors available upon request.

**Applied Two Stage Coating** - A durable applied finish that can be used indoors or outdoors. Select from textured or smooth finish.

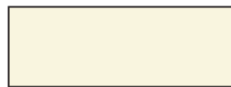
Available high gloss, semi gloss, and matte finishes. Select from 30 standard colors. Custom colors available upon request.

**Molded Gel Coat Fiberglass** - This FRP composite comes in high gloss with a smooth finish. Can be used indoor or outdoor. Select from 30 standard colors. Custom colors available upon request.

### 30 DESIGNER COLOR SELECTIONS



DC-53 Pure White



DC-39 White Honey



DC-11 Alabaster



DC-46 Bone



DC-38 Beige



PD-10 Navy Blue



PD-28 Hunter Green



PD-33 Anastasia Emerald



PD-34 Calypso



PD-29 Laguna



PD-20 Candy Apple



PD-13 Earth Red



PD-12 Garnet



PD-18 Rosewood



PD-27 Plum



PD-25 Cinnamon



PD-24 Indiana Clay



PD-17 Paprika



PD-15 Peach



PD-23 Mauve Dust



PD-31 Russian Sky



PD-36 Teal



PD-38 Blue



PD-32 Evening Shadows



PD-37 Violet



DC-34 Black



PD-19 Charcoal



PD-8 Dove Gray



PD-2 Gray



PD-14 Greige

All colors shown are printed representations. Actual colors may vary. If color match is critical please request an actual sample.

# AL- Fiberglass finishes

## FINISH SELECTION B

**Feather-Lite Stone** - A light weight stone composite manufactured of FRP resins, fillers, stone aggregate and other components. The product has a manufactured fine texture. This product can be used indoors or outdoors. Select from the following colors.



100

150

165

175

180

185

200



250

275

300

350

375

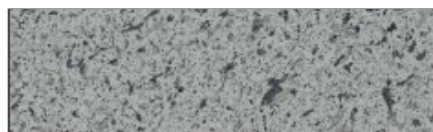
400

410

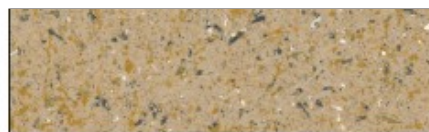
All colors shown are printed representations. Actual colors may vary. If color match is critical please request an actual sample.

## FINISH SELECTION C

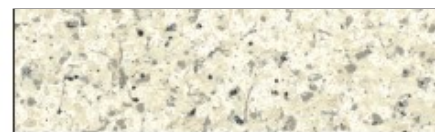
**Multi-Spec** - This topcoat enhancement can be used on any of the ALLIED finishes. The product is suitable for indoors or outdoors. Select from the following colors.



**Multi Spec Greystone**



**Multi Spec Sandstone**

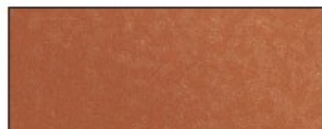


**Multi Spec Whitestone**

All colors shown are printed representations. Actual colors may vary. If color match is critical please request an actual sample.

## FINISH SELECTION D

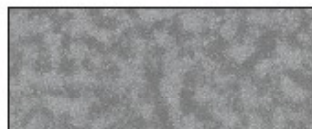
**Patina Metal** - This durable finish can be used indoors and outdoors. Finish develops a "patina effect" as surrounding elements dictate. Select from the following colors.



**Copper Metal**



**Gold Metal**



**Stainless Steel Metal**



**Bronze Metal**

All colors shown are printed representations. Actual colors may vary. If color match is critical please request an actual sample.